

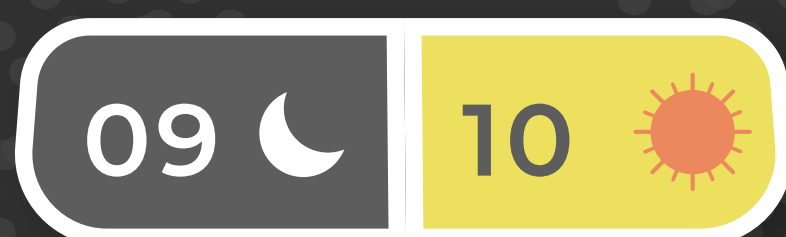
LEH LADAKH RIDERS PACK



Dehi - Manali - Leh Ladakh - Dehi

CUSTOMISED PACKAGES JUST FOR YOU

DURATION



+91 6235 769 232 +91 7303 669 232 +91 6235 869 232 info@wanderlusttripping.com

ABOUT THE SPOT



A trip to Ladakh is every biker's dream! However, it isn't as easy as it might seem to be but you have nothing to worry about. This bike trip to Ladakh from trip2heavens is going to be the best experience of your life.

Ladakh- which is rightly called 'The Land of High passes' is one of the most captivating regions of India. The landscapes are so beautiful that you'll end up adoring them for hours and it is a dream destination of many people!

This Leh Ladakh bike trip is your chance to experience this charming place which will make you doubt whether this is for real or just in your head!

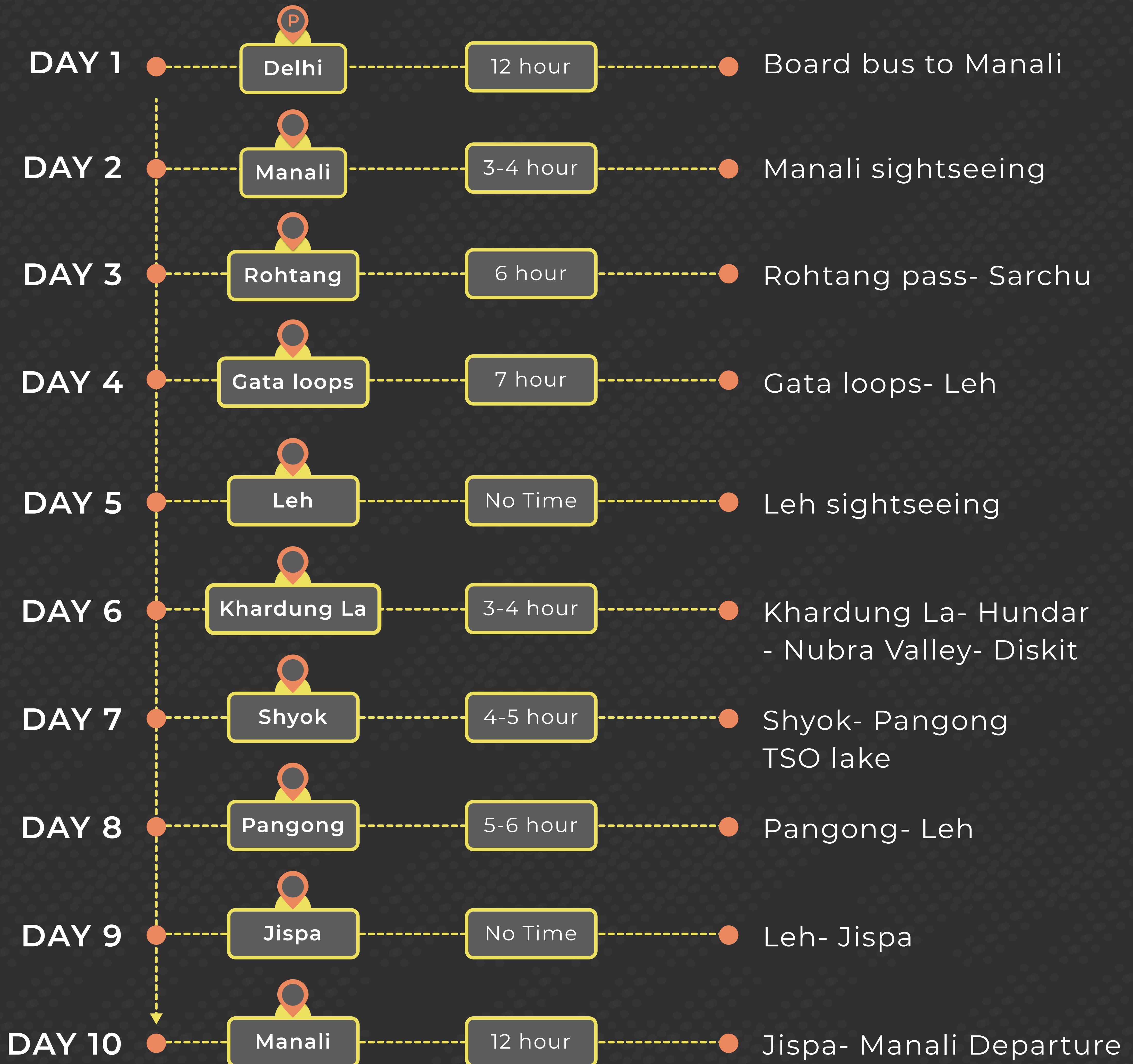
We are aware of the shortcomings and have successfully been able to manage them. It is finally time to get your gears out and get ready for the best trip of your life!

HIGHLIGHTS

- 📍 Manali sightseeing
- 📍 Atal Tunnel
- 📍 Jispa
- 📍 Sarchu
- 📍 Leh local sightseeing
- 📍 Nubra Valley
- 📍 Pangong



BRIEF ITINERARY



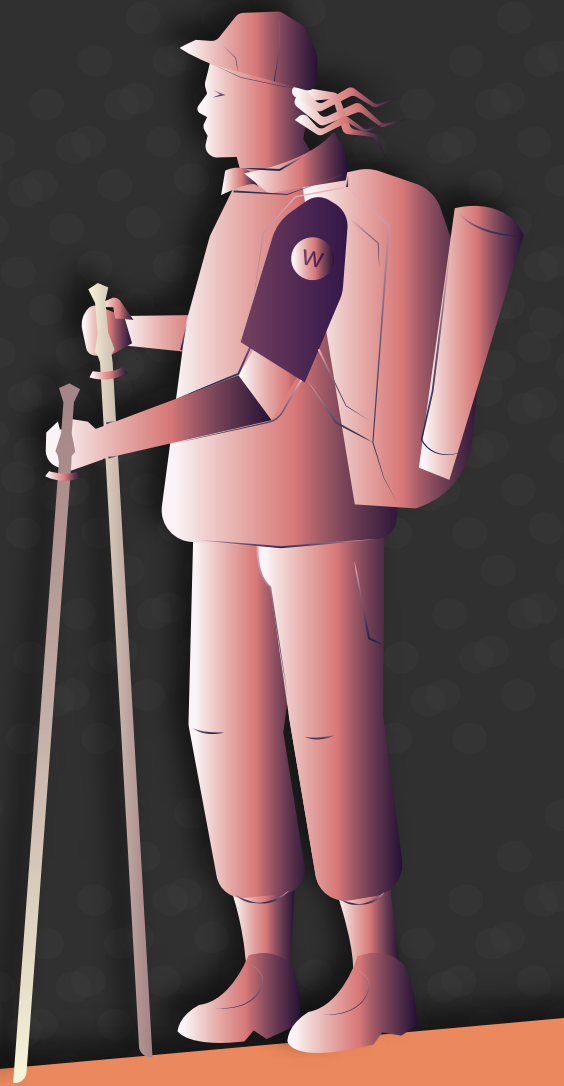
Please note- Time and distance may vary.

DAY 1



📍 Depart from Delhi

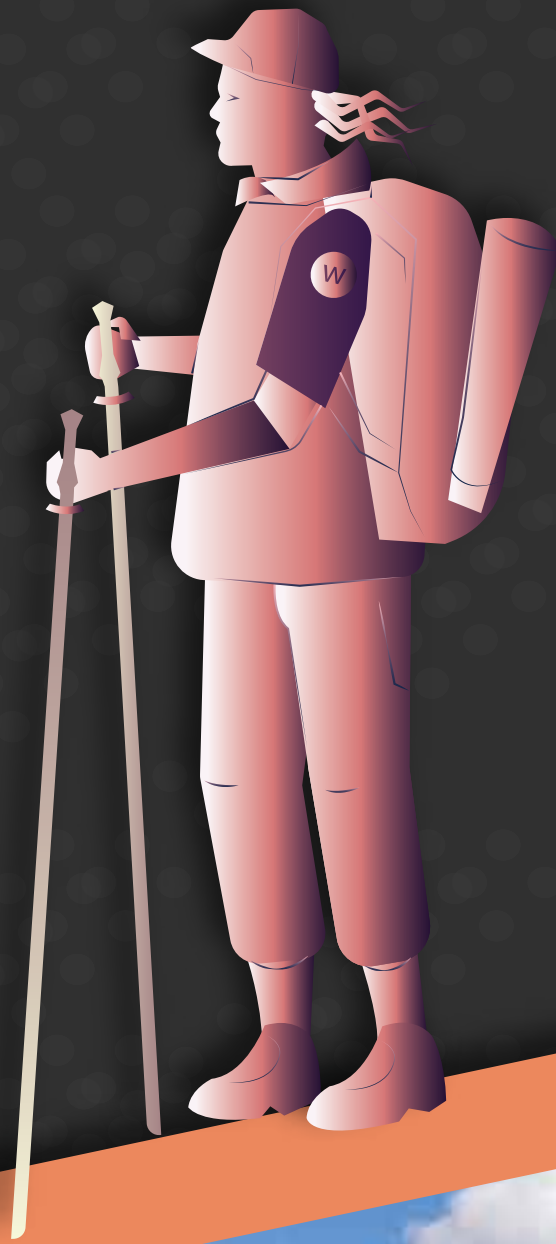
📍 We will meet at the decided point in the evening from where we will board the bus towards Manali. It is going to be an overnight journey and we will take a stop for dinner which will be at your own expense.



DAY 2



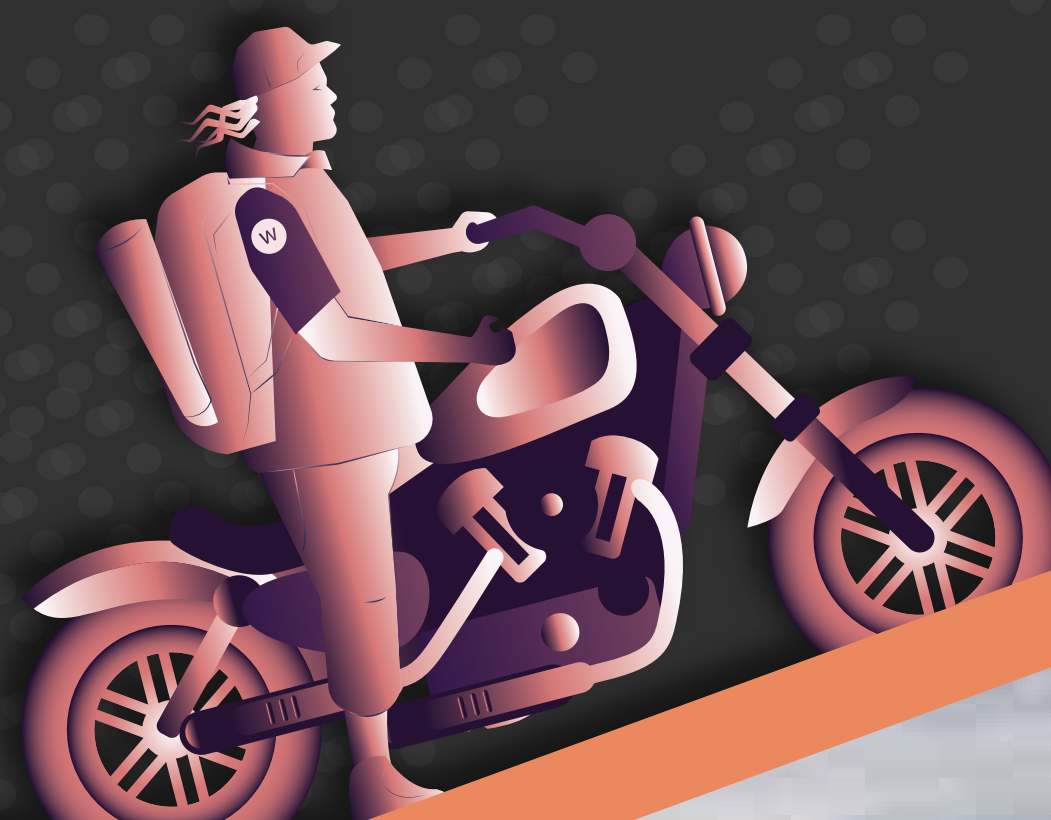
- 📍 Arrival at Manali
- 📍 We will be arriving in Manali early in the morning from where you will be transferred to the hotel. After check in, you will get some time to relax. This is a free day so that you get time to get familiarised with the weather conditions.
- 📍 You can go for sightseeing on your own and explore the nearby places as per your convenience.
- 📍 Suggested places- Hidimba temple, Jogni Waterfall, Vashisht Temple, Mall road and cafes in Old Manali
You will be given your bikes in the once you are back and then dinner will be served at night.
- 📍 Overnight stay in Manali



DAY 3



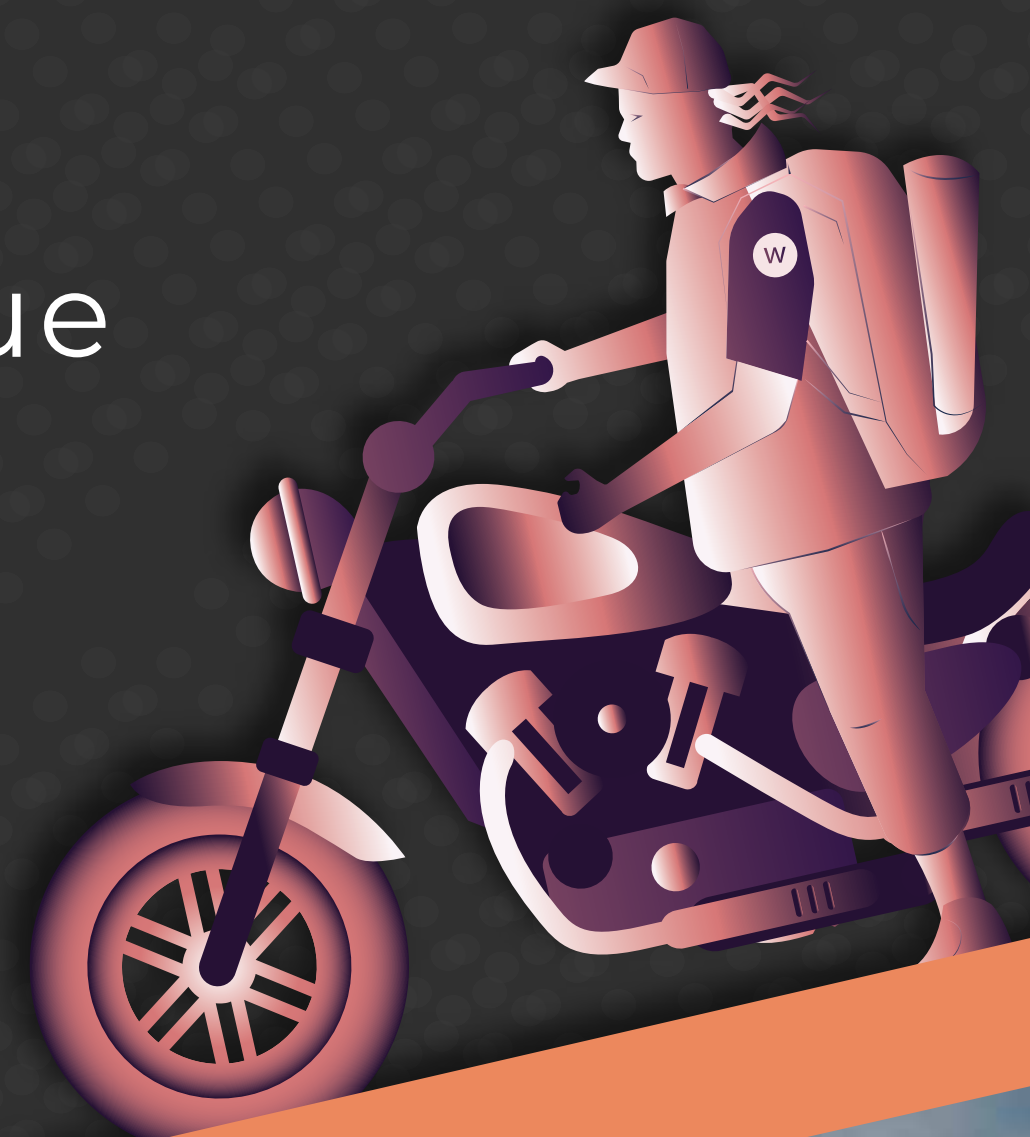
- 📍 Rohtang Pass- Keylong- Baralacha La- Sarchu (223 km)
- 📍 After breakfast, we will check out from the hotel and leave for the much awaited bike trip! We will start our ride on the famous Leh-Manali highway. We will be driving via Rohtang Pass (3970 m) towards Lahaul Valley. We will also be visiting the dreamy Suraj Tal, which is a small lake on the top of Baralacha La and enjoy the mesmerising views.
- 📍 Once we arrive at Sarchu, we will check in the camps and enjoy our night under the night sky full of stars and dinner will be served.
- 📍 Overnight stay in Sarchu
- 📍 Meals- Breakfast and dinner



DAY 4



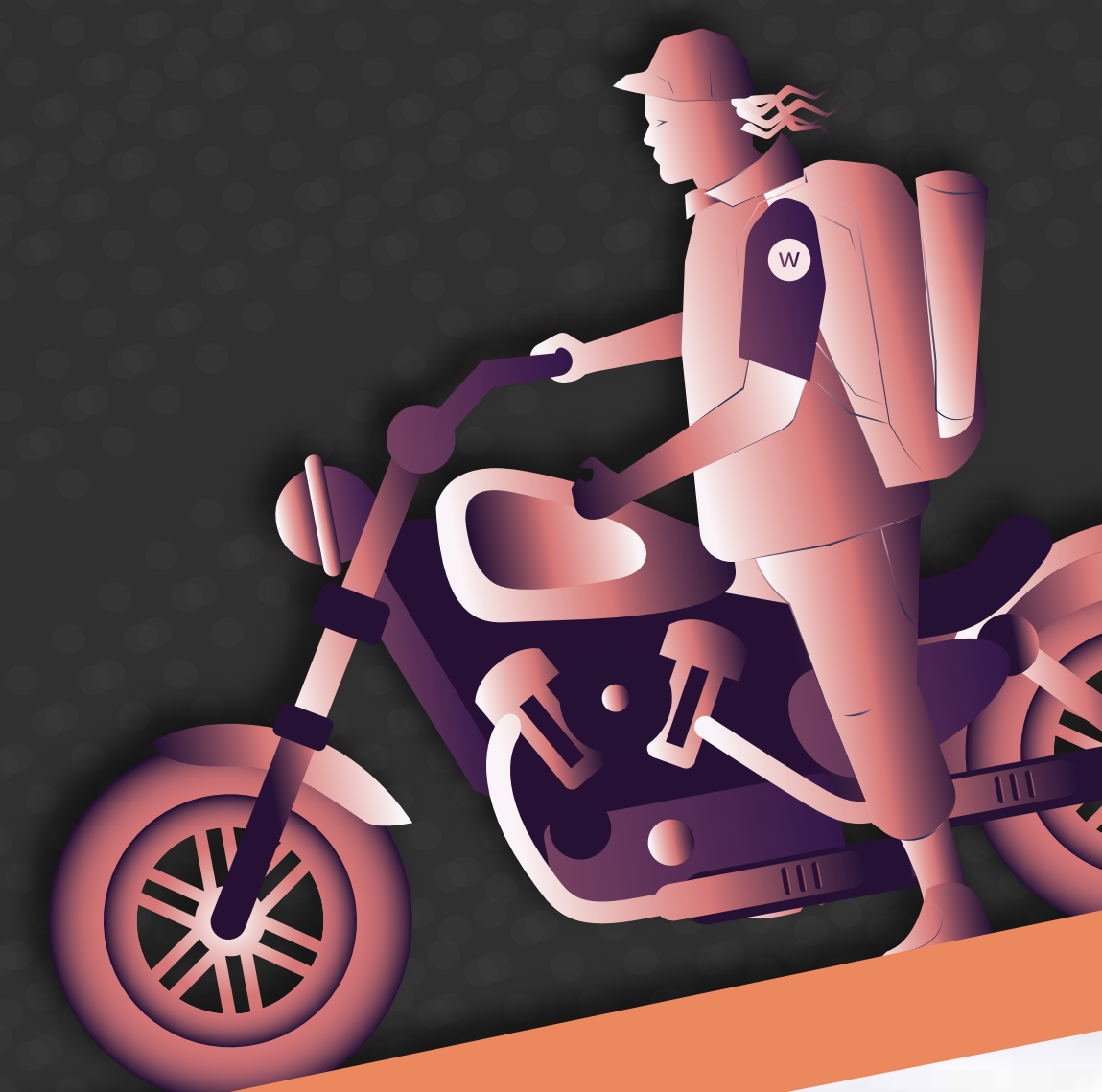
- 📍 Gata loops- Lachung LA- Tanglang- Leh (250 km)
- 📍 After breakfast, we will leave for Leh. We will be crossing the Gata Loops, Nakee- La (4739 m) and then Lachung LA that is right above the brandy bridge.
- 📍 We will reach Pang which is an army base in the afternoon and take a stop for lunch which is going to be at your owwra nqe
We will be driving through the captivating Moore Plains and after we cross Tanglang-La, we will continue our journey towards Upshi, Karu and then reach Leh. We will check in to the hotel/camp where dinner will be served.
- 📍 Meals- Breakfast and dinner
- 📍 Overnight stay at Leh



DAY 5



- 📍 Leh local sightseeing. This day has been kept to explore Leh.
- 📍 After breakfast, we will leave for the local sightseeing and we will be covering Hall of Fame, Shanti Stupa, Magnetic hills and the holy Pathar Sahib Gurudwara. You will have the evening free to explore Leh in your own way. You can visit the market and some cafes as per your preference and enjoy the local cuisine. You can come back to the hotel by the evening where dinner will be served.
- 📍 Meals- Breakfast and dinner
- 📍 Overnight stay at Leh



DAY 6



- 📍 Khardung La- Hundar- Nubra Valley- Diskit
- 📍 After breakfast, we will check out from the hotel and leave for Nubra Valley via Khardung La. This is the highest motorable road at 5359 mt and every biker dreams of coming here. Congratulations for fulfilling yours!
- 📍 You will find yourself surrounded between the Karakoram and Ladakh ranges of the Himalayas. We will check in to the hotel/camp and visit the Sand Dunes. This is the cold desert where you can take a camel safari to enjoy the experience. (At your own expense)
- 📍 We will be coming back to the hotel/camp by evening where dinner will be served.



DAY 7



- 📍 Shyok- Pangong TSO lake (150 km)
- 📍 After breakfast, we will visit the Diskit Monastery and then continue towards PangongTso via Shyok and Agham village. Pangongtso is going to leave you spell bound as it changes it colours 4-5 times in a day and the backdrop is of the mountains in different hues. This is a sight to die for and you will be surprised for sure! We will reach the Pangonglake and check in to the campsite where dinner will be served.
- 📍 Meals- Breakfast and dinner
- 📍 Overnight stay at Pangong



DAY 8



📍 Chang La- Leh (160 km)

You should wake up early in the morning to see the sunrise which looks straight out of a painting. After breakfast, we will go to Leh via Chang La which is the second highest motorable road at 5350 mt. We will reach Leh by evening and explore the area. We will come back to the hotel in the evening where dinner will be served at night.

📍 Meals- Breakfast and dinner

📍 Overnight stay at Leh



DAY 9



- 📍 Leh to Jispa
After breakfast, we will say goodbye to Leh and leave for Manali. We will take a stop at Jispa for the night where we will check in to our camps. We will spend the night and get ready to go to Manali the next day.
- 📍 Meals- Breakfast and dinner
- 📍 Overnight stay at Jispa

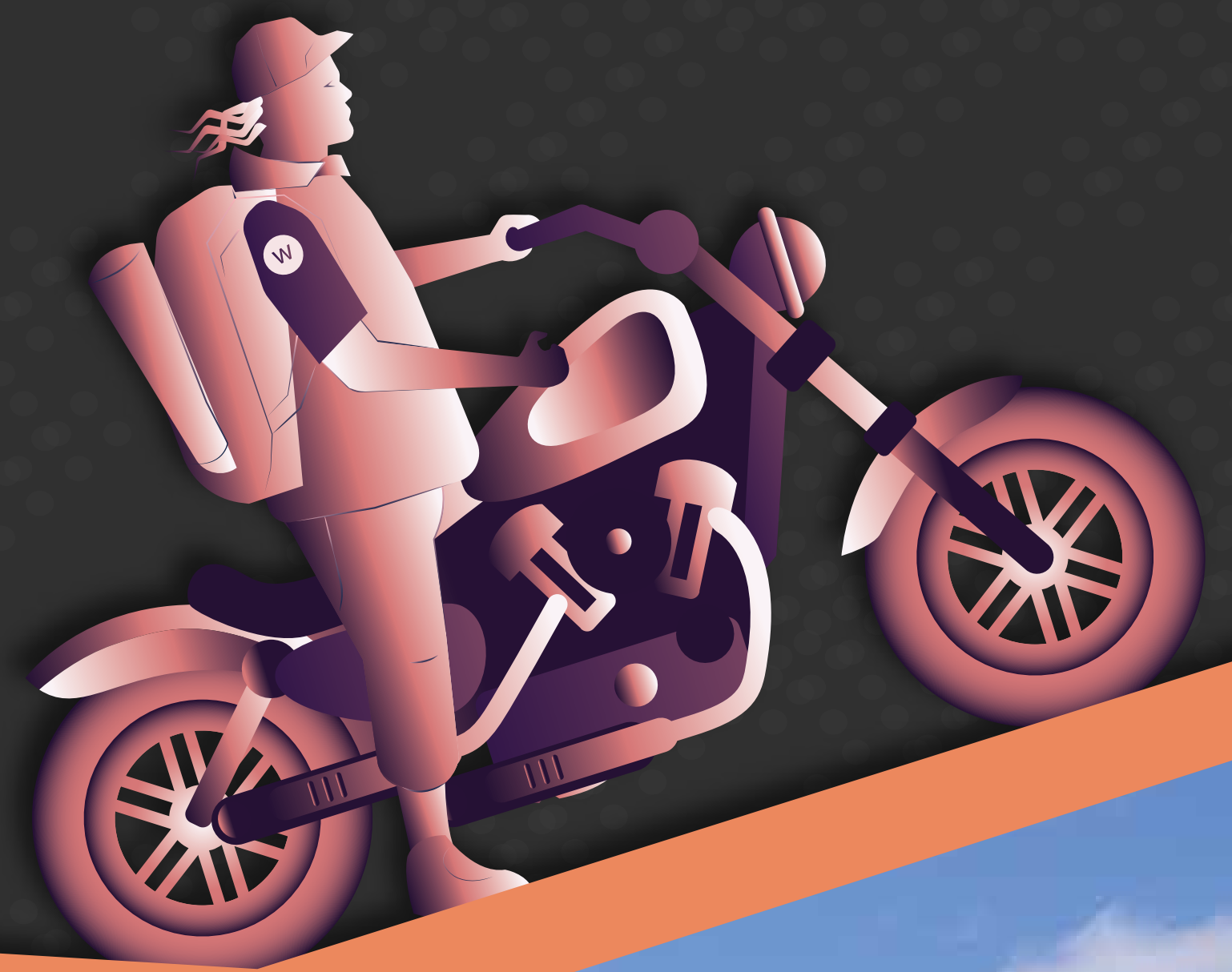


DAY 10



📍 Jispa- Manali departure

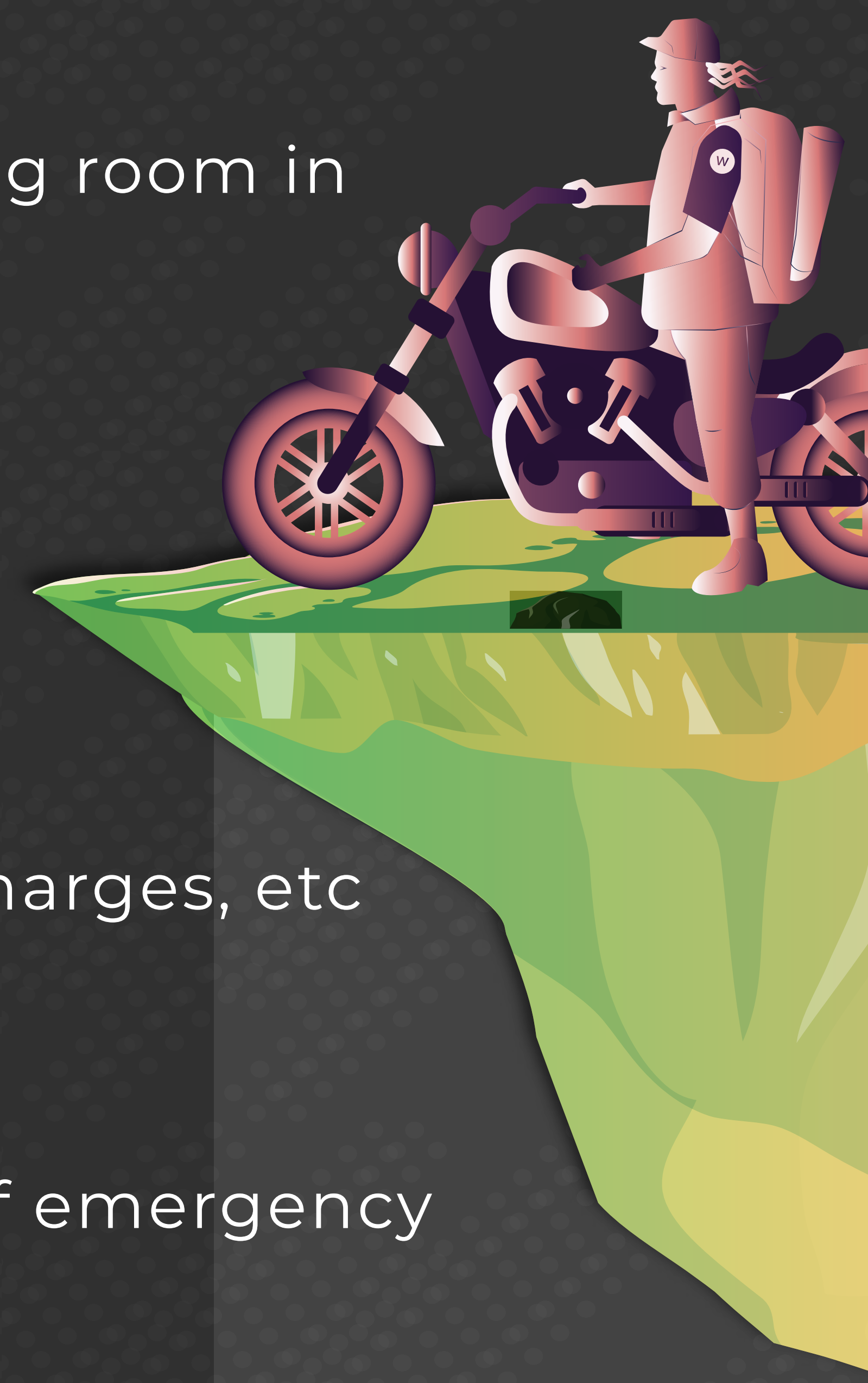
📍 After breakfast, we will leave for Manali early in the morning. Once we reach Manali, we will depart for Delhi in the evening with lots of memories and new friends!



INCLUSIONS



- 📍 Volvo transfer from Delhi to Manali & back
- 📍 Bike's Rent for the journey
- 📍 Fuel for the bike(Manali to Manali)
- 📍 Stay- Accommodation in double/triple sharing room in hotels/camps/guest house
- 📍 Meals- wherever mentioned
- 📍 Mechanical Backup
- 📍 All inner line permits for the trip
- 📍 Driver Night Charges, Toll Tax and parking Charges, etc
- 📍 Tour manager throughout the trip
- 📍 An Oxygen Cylinder 24X7 in the car in case of emergency
- 📍 Helmet
- 📍 Activities- Motorcycle ride and sightseeing wherever mentioned



EXCLUSIONS



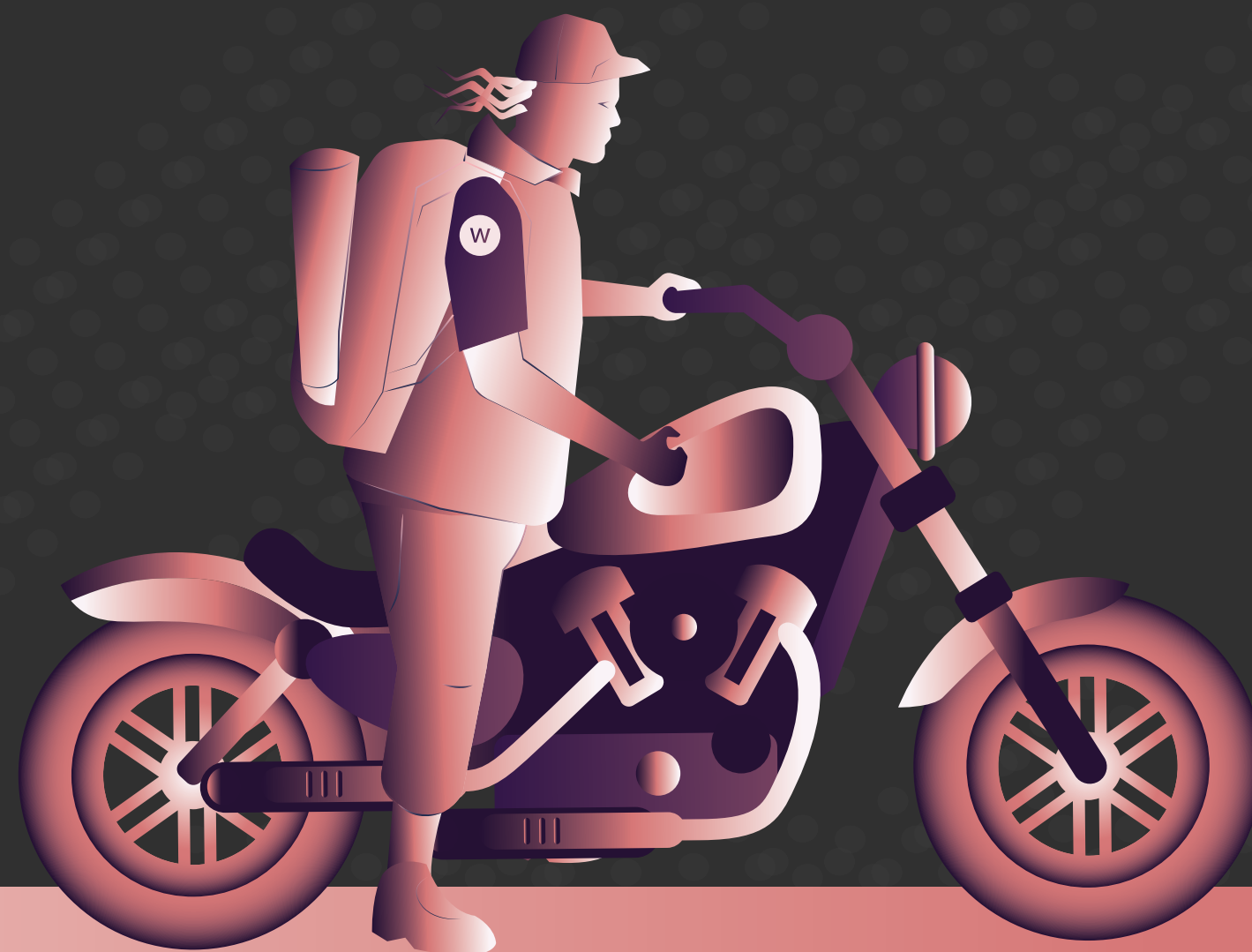
- ① Any other food and beverage charge that is not included in the package
- ① Any other expanses not mentioned in the inclusions
- ① Any other costing involved due to any kind of natural calamity forced circumstances which are out of our control
- ① Any entry tickets
- ① Any other costing involved due to any kind of natural calamity or forced circumstances which are out of our control
- ① Any other expanses not mentioned in the inclusion column
- ① Any damage to bike except engine damage has to be borne by client



REMARKS FOR GUESTS



- 📍 Numerous factors such as weather, road conditions, the physical ability of participants etc. may cause itinerary change . We reserve the rights to change any schedule in the interest of safety, comfort and general well-being.
- 📍 While we provide riders with basic riding gear (Helmet) they need to arrange jackets, knee guards, elbow, gloves etc.. it's mandatory to wear all riding gears while riding
- 📍 INR 10000/- needs to be submitted as security for the bike before starting the trip.
- 📍 If a rider is unable or doesn't want to complete his trip in between the trip, there will be an extra charge - INR 2000/- per day if the team captain or trip crew rides the bike or INR 5000/- for drop the bike.



CANCELLATION POLICY



If the client is willing to amend or cancel his\her booking because of whatsoever reasons including any personal reasons including non-payment of the balance payment, the company is liable to recover cancellation charges from the client. In case of unforeseen weather conditions or government restrictions, the activity may be cancelled and in such cases, all cancellations are to be communicated in written and advance amount is non-refundable, besides the forfeiture of the deposit amount of the tour, further charges will be levied as follows-

- 📍 30 to 20 days prior to departure of the tour, 100% of total tour cost.
- 📍 19 to 10 days prior to departure of the tour, 75% of total tour cost.
- 📍 10 days to 1 day prior to departure of the tour, 50% of total tour cost.
- 📍 There will be no refund in case of not showing up.
- 📍 Note: Any damage to the bike will be paid on spot. Cancel of bike trip will cost 10,000/- extra for taking bike back to Manali

THANKS & REGARDS



What a Wonderful World

Let's Watch it Together
Search us @



wanderlust_tripping



trippingofwanderlust

+91 6235 769 232

+91 7303 669 232

+91 6235 869232

info@wanderlusttripping.com