

# MELTING ICE PACKAGE

DeIhi - M<sup>a</sup>nali - La<sup>a</sup>haul - DeIhi

CUSTOMISED PACKAGES JUST FOR YOU

DURATION

04



05



+91 6235 769 232 +91 7303 669 232 +91 6235 869 232 info@wanderlusttripping.com



# ABOUT THE SPOT



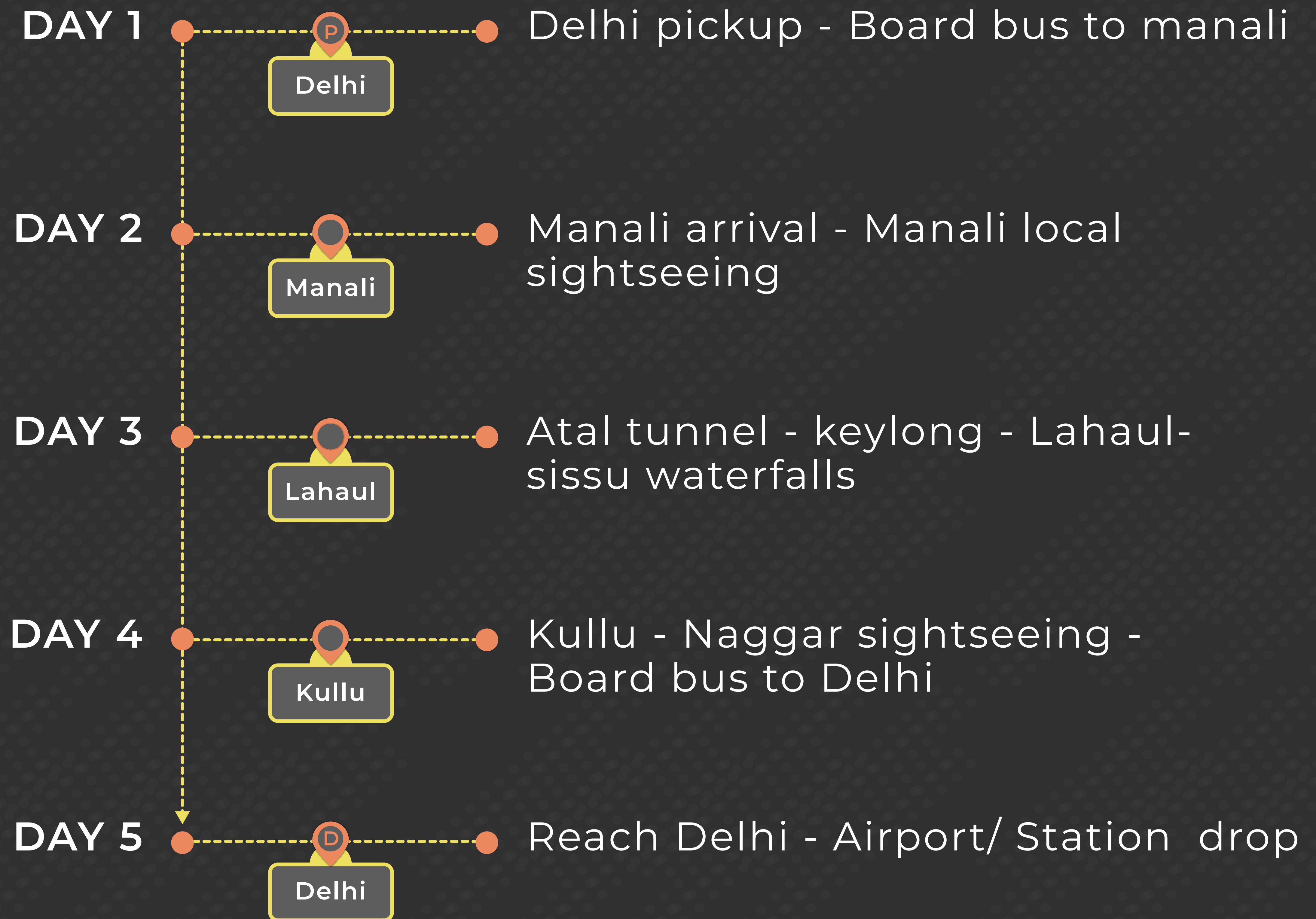
Everyone's favourite vacation spot, Manali is a high altitude Himalayan town that is a treat for every wanderlust. Surrounded by the Pir Panjal and Dhauladhar ranges, the aura of Manali is incomparable and unbeatable. Be it a leisure trip with the family, a backpacking trip with your buddies, or a solo trip, Manali has got you covered!

With the opening of the Atal tunnel, the Lahaul valley has become an extension of Kullu- Manali. Previously, a journey between Manali valley to Lahaul valley and Spiti valley would take around 4-5 hours. With the tunnels completion and opening, this time has reduced to just over 90 minutes. Now one can easily explore several attractions including Lahaul valley, Sissu waterfalls, Keylong, Tandi and the sangam of Chandra and Bhaga rivers in just a day.





# BRIEF ITINERARY





# DAY 1



- 📍 Pickup from Airport/Railway station
- 📍 Delhi sightseeing (If possible)
- 📍 Board coach to Manali (14hrs)
- 📍 Overnight journey





# DAY 2



- 📍 Reach manali by morning
- 📍 Hotel Check-in
- 📍 After Fresh-up, start manali local sight seeing such as Hadimba Devi temple,
- 📍 Vashisth hot water spring, Bhudhist monastery, Van Vihar park, Mall Road.
- 📍 Back to hotel with lot of memories and relax rest of the day.
- 📍 Dinner
- 📍 Stay

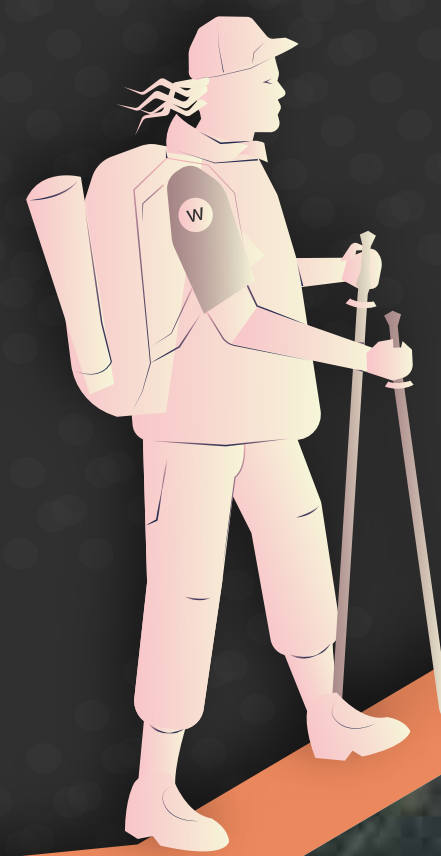




# DAY 3



- 📍 Wake up and have breakfast
- 📍 Experience Himalayan Road journey
- 📍 Cross the tunnel and enjoy the beauty of Lahaul valley
- 📍 Sissu waterfall hike
- 📍 Back to Manali
- 📍 Dinner
- 📍 Stay

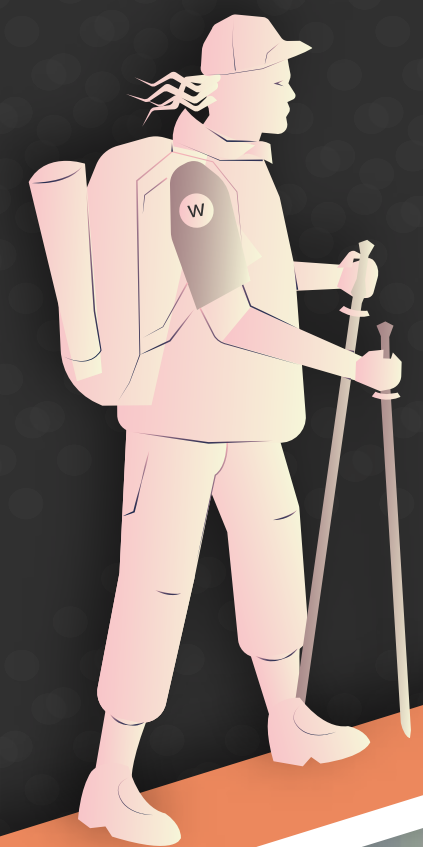




# DAY 4



- 📍 Wake up and breakfast
- 📍 Hotel check out
- 📍 Proceed to Naggar and Kullu
- 📍 Naggar castle visit
- 📍 Kullu valley ride
- 📍 Time for Paragliding and Rafting (Own payments)
- 📍 Back to Manali
- 📍 Board bus to Delhi (14hrs)
- 📍 Overnight Journey





# DAY 5



- 📍 Reach Delhi by morning
- 📍 Pickup and Airport/Railway station drop







# INCLUSIONS

- 📍 Entire travel as per the itinerary
- 📍 2 night accommodation
- 📍 2 Breakfast & 2 Dinner
- 📍 Driver charges, toll, parking charges, permits
- 📍 Malayali assistance throughout journey

# EXCLUSIONS

- 📍 Any other food and beverage charge that is not included in the package
- 📍 Any other expanses not mentioned in the inclusions
- 📍 Any other costing involved due to any kind of natural calamity forced circumstances which are out of our control
- 📍 Any Entry Tickets

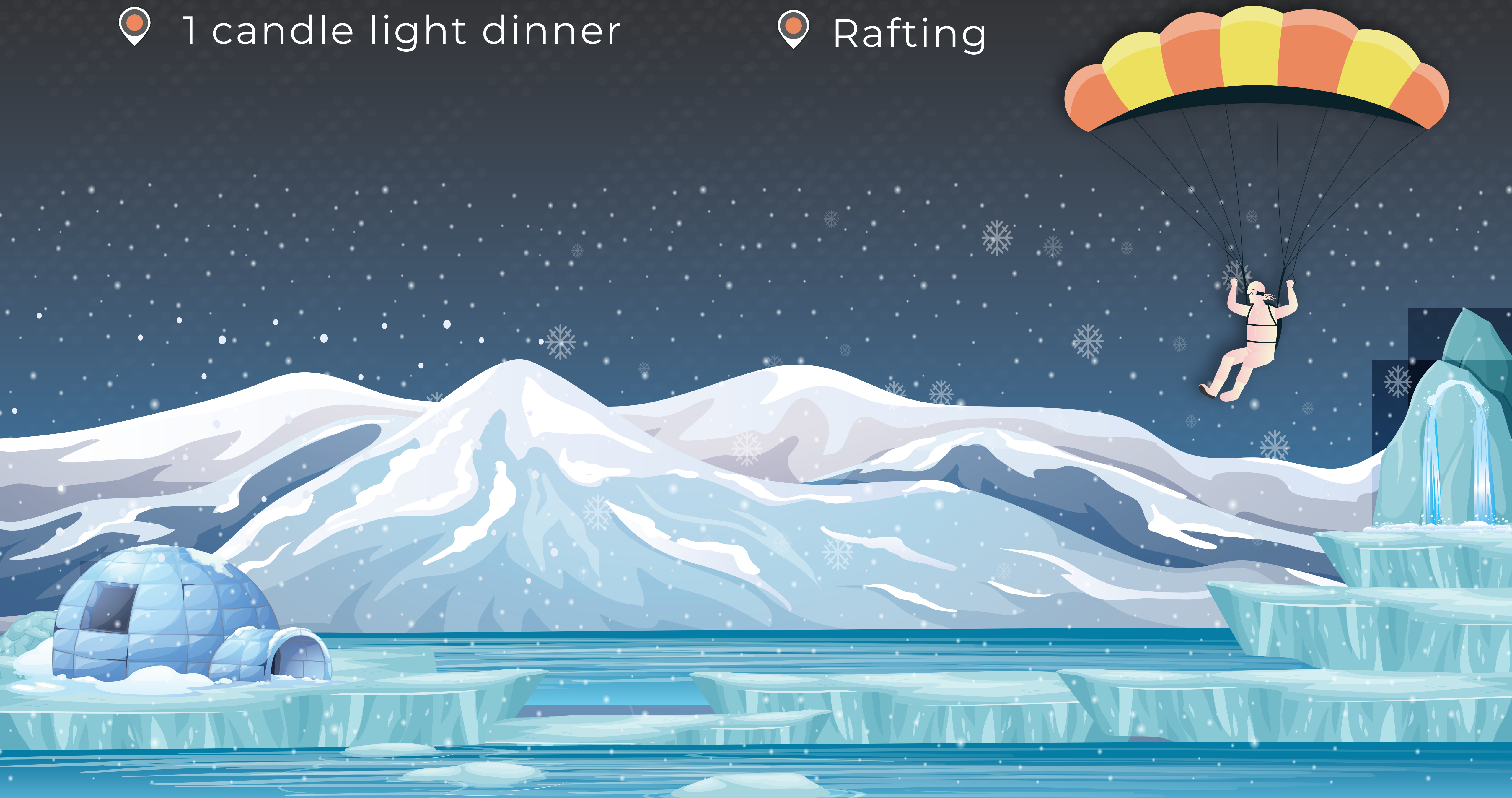




# PACKAGE ADD ONS



- 📍 Igloo stay / Tent camping
- 📍 Bonfire with barbecue
- 📍 Body massage
- 📍 Bike ride
- 📍 Room Heater
- 📍 1 candle light dinner
- 📍 Room Decorations & Cakes
- 📍 Delhi last day fresh-up
- 📍 Snow activities
- 📍 Paragliding
- 📍 Snow Dress
- 📍 Rafting





# THANKS & REGARDS



*What a Wonderful World*

Let's Watch it Together  
Search us @



*wanderlust\_tripping*



*trippingofwanderlust*

+91 6235 769 232

+91 7303 669 232

+91 6235 869232

info@wanderlusttripping.com